



IPAC Archive Holdings

L. M. Rebull, 4 Jan 15



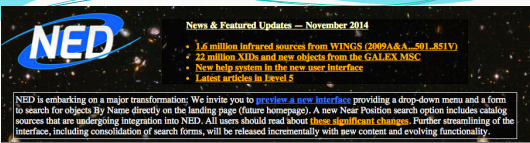
Why?

- The "I" in NITARP stands for "IPAC", the Infrared Processing and Analysis Center, based at Caltech.
- IPAC is not the Astronomy Department!
- IPAC houses several different archives, each with their own goals, methodology, tools, staff, (and sometimes science goals).
- As NITARP educators, you will learn about at least one of our data sets in great detail, but the rest of IPAC's holdings may also prove useful to you in your NITARP project, or your future (post-NITARP) work!
- Essentially all of IPAC has recently been consolidated into one AAS booth (for better branding in the community).
- (There are archives based at other places that have other booths here too...)



NED

- NED = NASA/IPAC Extragalactic Database
- Focused on extragalactic science.
- Ingests catalogs and literature tables.
- 470+ million unique objects!
- Myriad cross-links, notes, etc.
- Updates every few months.
- <http://ned.ipac.caltech.edu/>




News & Featured Updates — November 2014

- 1.6 million Infrared sources from WINGS (099A&A...501...851V)
- 22 million XIDs and new objects from the GALEX MSC
- New help system in the new user interface
- Latest articles in Javel 5

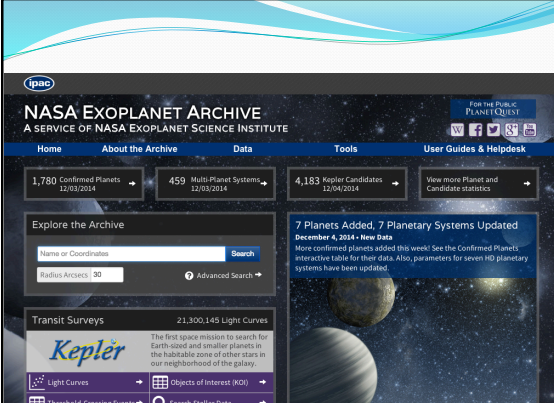
NED is embarking on a major transformation. We invite you to [preview a new interface](#) providing a drop-down menu and a form to search for objects. By Name directly on the landing page (future homepage). A new Near Position search option includes catalog sources that are undergoing integration into NED. All users should read about these [significant changes](#). Further streamlining of the interface, including consolidation of search forms, will be released incrementally with new content and evolving functionality.

OBJECTS	DATA	LITERATURE	TOOLS	INFO
By Name	Images by Object Name Region	References by Object Name	Coordinate Transformation & Extinction Calculator	Introduction Latest News/Updates
Near Name	Photometry & SEDs	References by Author Name	Velocity Calculator	Features FAQ
Near Position	Spectra	Text Search	Cosmology Calculators	Overview (pdf)
IAU Format	Redshifts	Knowledgebase	Extinction-Law Calculators	Source Nomenclature
By Parameters	Redshift-Independent Distances	Galaxy Distance Tabulations (NED-D)	Galaxy Environment by Precomputed Parameters Radial Velocity Constraint	Web Links New Interface
By Classifications Types, Attributes	Classifications by Object Name	Abstracts	X/Y offset to RA/DEC	Glossary & Lexicon



NASA Exoplanet Archive

- Focused on stars harboring exoplanets, or thought to harbor exoplanets.
- Includes Kepler data, and US portal to CoRoT data.
- Anyone using Kepler data (none of you this year?) will get more of an introduction to this as part of your work.
- Online tools to work with these data, like the periodogram service.
- <http://exoplanetarchive.ipac.caltech.edu/>



NASA EXOPLANET ARCHIVE
A SERVICE OF NASA EXOPLANET SCIENCE INSTITUTE

Home About the Archive Data Tools User Guides & Helpdesk

1,780 Confirmed Planets 12/03/2014 459 Multi-Planet Systems 12/03/2014 4,183 Kepler Candidates 12/04/2014 View more Planet and Candidate statistics

Explore the Archive


Name or Coordinates Search

Radius (Earth radii) 30 Advanced Search

Transit Surveys 21,300,145 Light Curves

Kepler The first space mission to search for Earth-sized and smaller planets in the habitable zone of other stars in our neighborhood of the galaxy.

7 Planets Added, 7 Planetary Systems Updated December 4, 2014 - New Data More confirmed planets added this week! See the Confirmed Planets interactive table for these data. Also, parameters for seven new planetary systems have been updated.





IRSA

- IRSA = NASA/IPAC Infrared Science Archive
- Charter is to provide interface to all NASA infrared and sub-mm data sets. Has a few others in there too.
- Some are small (e.g., Spitzer Legacy programs), and some are VERY large (all-sky surveys like WISE).
- IRSA datasets are cited in about 10% of astronomical refereed journal articles.
- Several of the newest data sets are served via Hydra; the rest are accessible via ATLAS or Gator.
- Total holdings in images: 88.1 TB, 17,684,845 images
- Total in catalogs: 20,668,829,117 sources
- Total in spectra: 16.62 GB, 157,712 spectra


Some IRSA holdings

- Infrared Astronomy Satellite (IRAS) – the first all-sky mid- and far-IR survey.
- Two Micron All-Sky Survey (2MASS) – a deep, uniform all-sky survey at J, H, and Ks.
- Spitzer Space Telescope – 3-160 microns (see earlier slide).
- WISE = Widefield Infrared Survey Explorer – all-sky survey at 3-23 um
- Planck = ESA mission, all-sky survey at 30 to 857 GHz (1 cm to 350 microns)
- Balloon-borne Large Aperture Submillimeter Telescope (BLAST) – a prototype of Herschel's SPIRE camera flown on a balloon in 2005-2006.
- Cosmic Evolution Survey (COSMOS) – a multiwavelength survey of a 2 sq. degree field involving every Great Observatory as well as ground-based data.
- BOLOCAM – a millimeter wavelength bolometer array at the Caltech Submillimeter Observatory.
- AKARI – a Japanese IR telescope that surveyed the whole sky at 9-160 microns.
- Midcourse Science Experiment (MSX) – a mid-IR telescope that mapped the Galactic plane and the gaps in the IRAS all-sky coverage.
- Infrared Space Observatory (ISO) – US interface to the ESA archive for ISO.

Spitzer

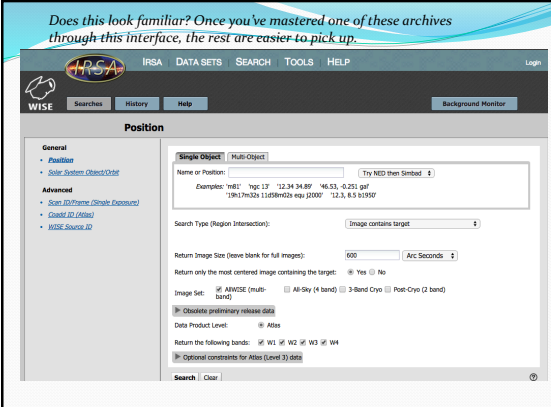
- Spitzer is both an active mission and no longer an active mission. Its entire archive is available through IRSA.
- Those of you using Spitzer data will get more of an introduction to Spitzer in the context of your work.
- Spitzer's data are available from the Spitzer Heritage Archive (SHA).
- It was the testbed for a new “look and feel” for all of IRSA's holdings, and the same underlying software is now used to serve several of the rest of IPAC's holdings – like Planck!

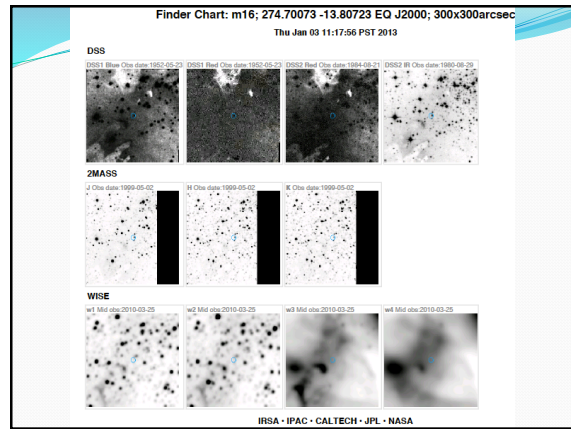
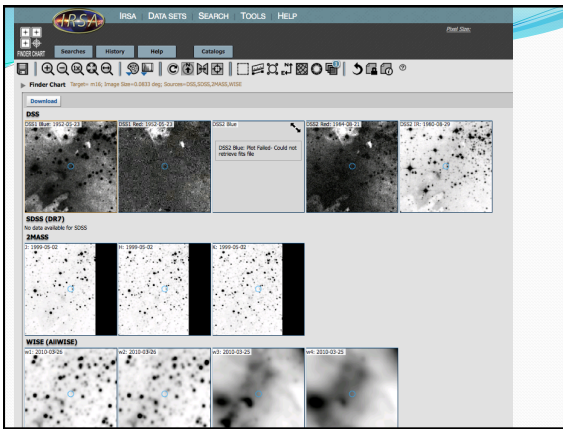
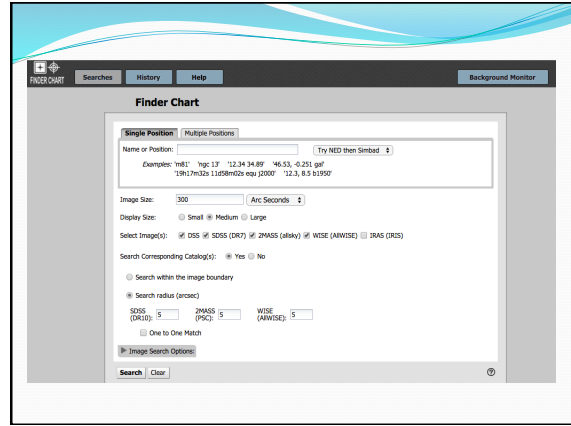
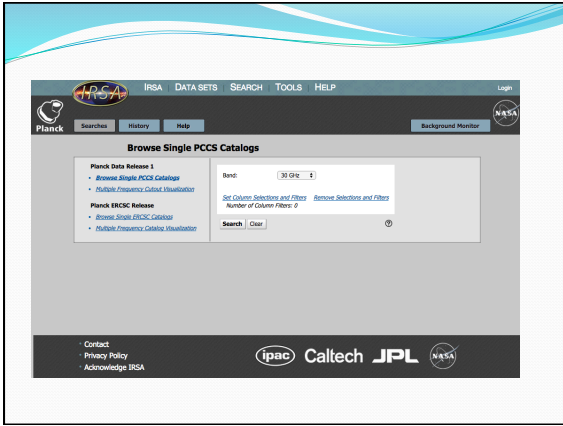



WISE

- Widefield Infrared Survey Explorer (WISE) is also both active and no longer an active mission. Its entire archive is available through IRSA.
- WISE was on for ~13 months, then turned off, and reawakened Fall 2013.
- Those of you using WISE data will get more of an introduction to WISE in the context of your work.
- WISE data (images and data tables) are available most transparently from the WISE Image Server.

Does this look familiar? Once you've mastered one of these archives through this interface, the rest are easier to pick up.





Summary

- LOTS of data available to you RIGHT NOW.
- Everything is web-based. Most are intuitive (I hope). Most have on-line help. They are getting more integrated all the time.
- Many have some related material on the NITARP wiki, and/or in NITARP Tutorials.
- All of these archives have representation here at the AAS.
- You will learn more about archives specific to you as you work on your project, but don't be afraid to branch out and go exploring!